



# Annual Report

**THARAWAL ABORIGINAL CORPORATION**

**2025**

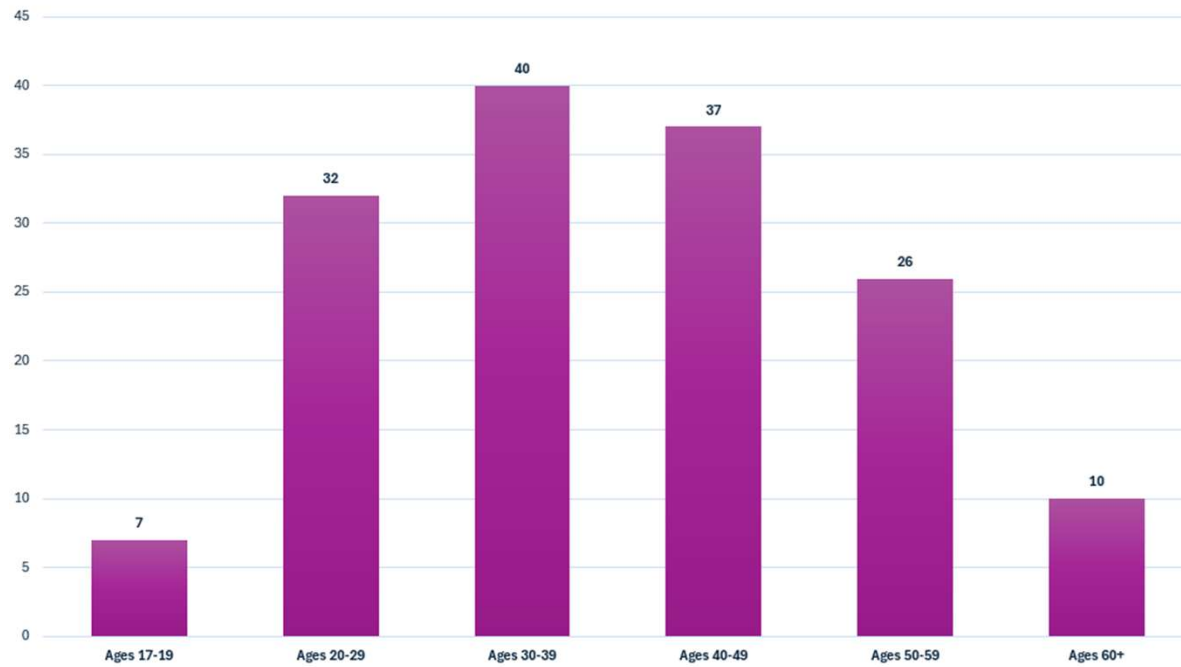
# Accreditation

## ALL OF THARAWAL ARE UNDER AN ACCREDITATION FRAMEWORK

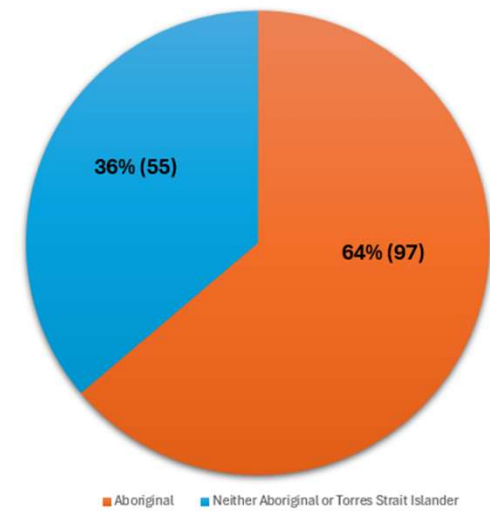
- **SEWB, BF, Admin** – QIC (QIP)
- **Medical** – AGPAL
- **Dental** – NSQHS (QIP)
- **Oorunga Wandarrah** – Childcare NQS (ACECQA)
- **Waranwarin** – Childcare NQS (ACECQA)
- **Housing** – National Regulatory System for Community Housing (NRSCH)



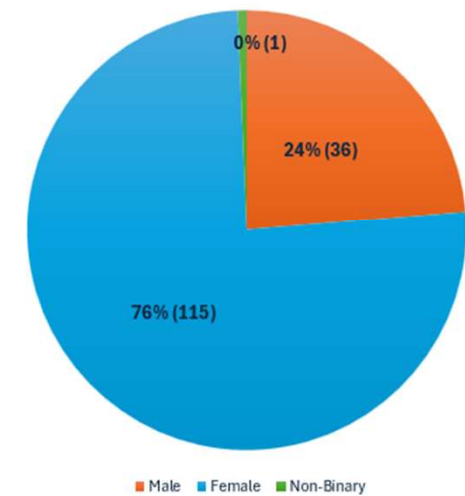
**Staff Age Profile**



**Staff Aboriginality Profile**



**Staff Gender Profile**



## Workforce Profile



# NAIDOC 2025

## Campbelltown Sports Stadium







# Elder's Olympics 2025

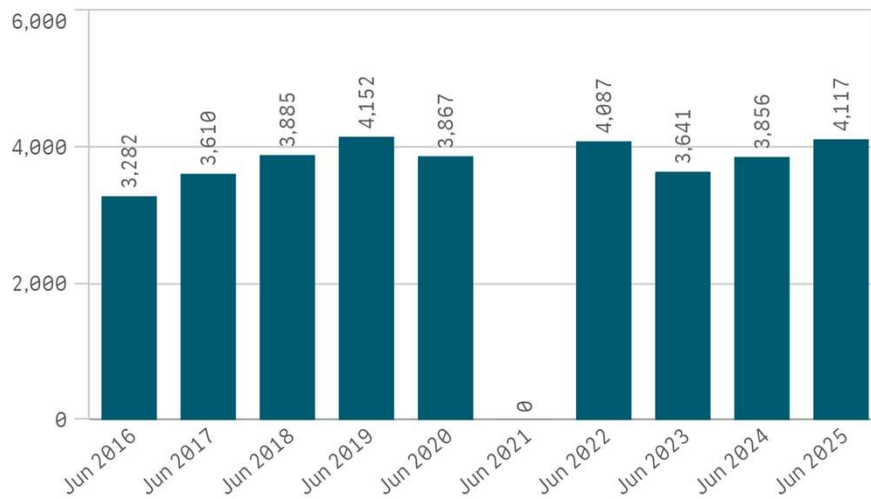
## Airds High School

# Aboriginal Medical Service

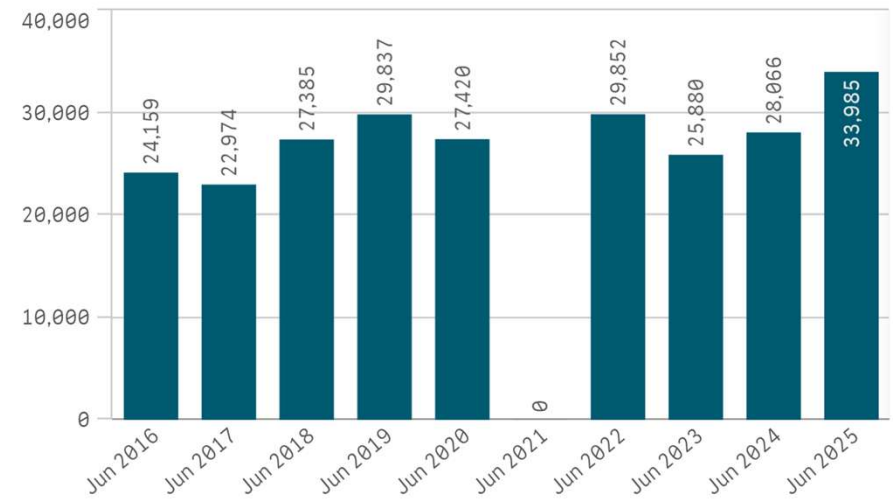


# Medical Service Snapshot

Clients



Episodes of Care



Medical undertook significant data cleansing and our nKPI for cervical screening improved from 52% to 69%

A significant step forward in preventative women's health.

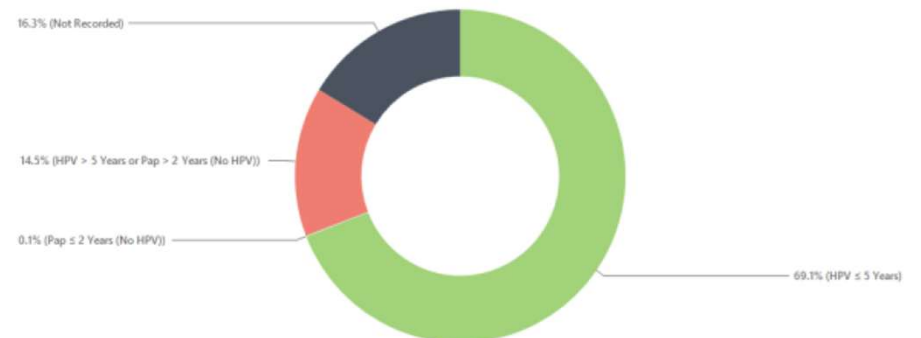
*July 2025*

Female Cervical Screening Status (Ages 25 – 74) [Population = 1153]



*October 2025*

Female Cervical Screening Status (Ages 25 – 74) [Population = 1177]





## AMS Health Promotion

- Breast Screening
- Liver scans
- Cervical screening
- Flu vaccines
- Clontarf Health Check Days



# New Services

---

In addition to the 20+ specialist services the AMS already conducts there are a few new services that have commenced:

- Gynaecology Service
- Stress Echocardiogram
- Orthopist (*diagnoses & treats eye movement disorders & Other vision problems*)
- Physiotherapist
- Elder Care Co-ordinator
- Menopause Specialist clinic commencing 2026
- Junior Medical Officers through NSW Health Education & Training Institute







## 9 Aboriginal Health Practitioner Graduates

Aboriginal Health Practitioners had the opportunity to join NSW Ambulance for a ride along for 2x 12hr shifts as part of their First Nations Health Worker Traineeship.

---

*I recently completed a ride-along with the ambulance team, and it was a really valuable experience. It gave me a better understanding of how our patients are treated in others care, and it provided a different but very positive kind of exposure to the pre-hospital side of care. Overall, it was a great opportunity and I'm glad I was able to take part in it. -Jasmine*





Some of our AHP's completed their EarTrain course with Tafe NSW and are now qualified to perform Ear screening. They are currently working with the local primary schools to conduct weekly outreach hearing tests within the schools.



---

Our Doctors attended the Deadly Doctors Forum in October 2025 where they were able to strengthen networks, share knowledge and education with other doctors working in ACCHO's in NSW

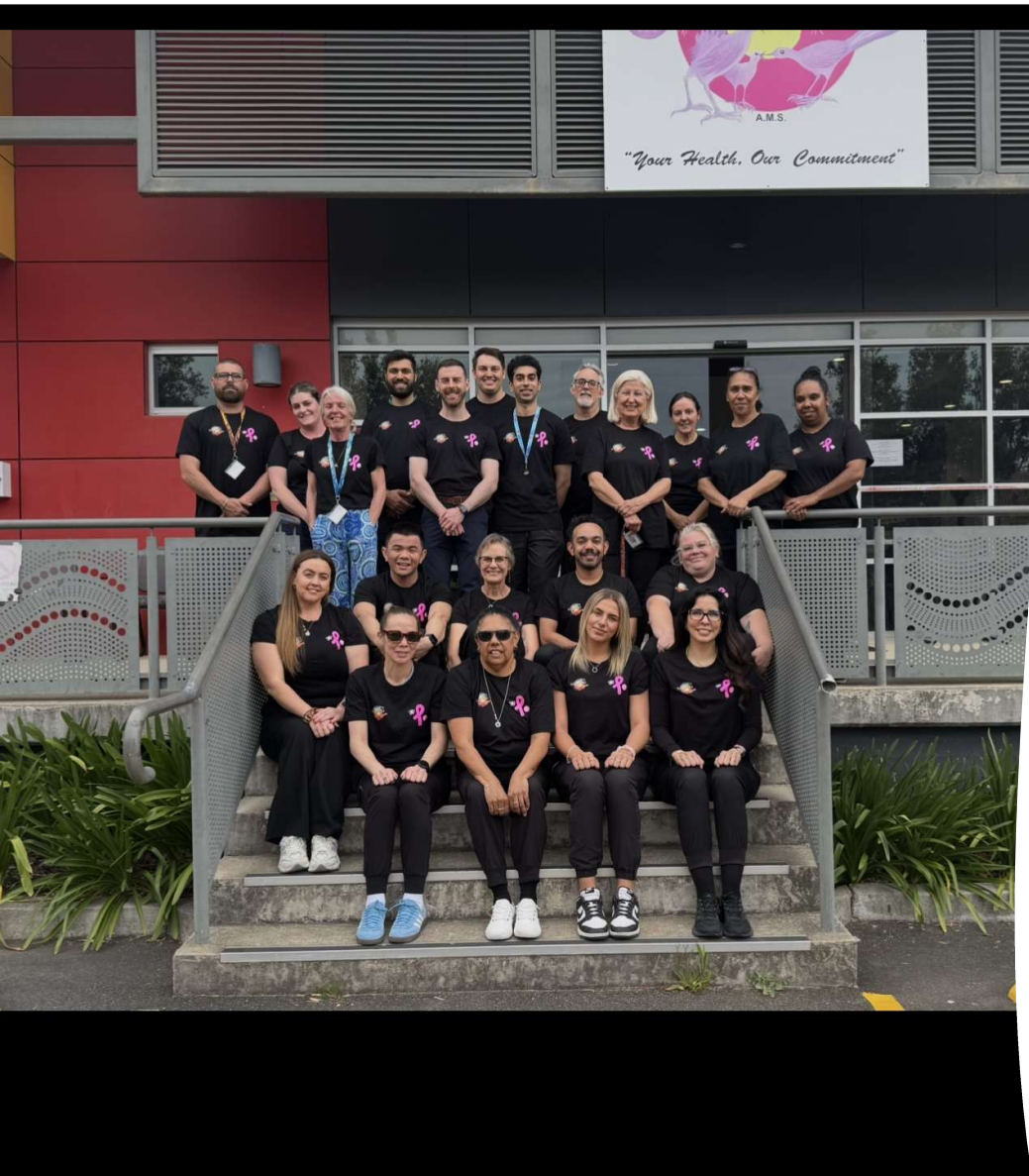




---

Our Aboriginal Medical Service is proud to have two Aboriginal doctors providing culturally grounded, community-led care, Dr. Ethan Johnson & Dr. Tatum Maybir





Tharawal participated in NACCHO's evaluation of Aboriginal Medical Services COVID-19 response and received a glowing review:

*"Effective health promotion was a pivotal element of Tharawal's pandemic response. The cumulative results of these efforts were substantial, with Tharawal achieving the second highest rate for vaccinations (>5,000 and over 80% of the community) in communities across NSW."*



Dr. Allison & AHP Margaret,  
attended the Aboriginal &  
Torres Strait Islander Cultural  
and Health Training (AHT) Day  
with the Joint Colleges  
Training Services in May 2025.





Our AHP's & Nursing staff completed their QAAMS training to perform Point of Care HBA1C & ACR Testing.



Tharawal's Medical  
ENT Service won the  
2025 Quality award  
for excellence in  
Aboriginal  
Healthcare.



Breastfeeding  
workshops  
conducted with  
Mums & Bubs in  
the community  
around breastfeeding  
& birthing.





# Tharawal Dental Clinic



**From 1/11/2024 – 1/11/2025**

- Number of patients: 1,225
- Total Visits: 2,906
- Total treatments: 9,393
- Dentures: 51
- Mouthguards: 63
- 2025 Knockout Mouthguards: 363



# THARAWAL METABOLIC PROGRAM



Medical supervision and management of conditions associated to obesity



Intensive lifestyle intervention



Onsite gym with individualized and supervised exercise classes



Consideration for pharmaceuticals and publicly funded bariatric surgery

## Multidisciplinary team made up of:

Aboriginal Health Practitioner

Dietitian, Nurse Practitioner

Endocrinologists

Exercise Physiologists, Physiotherapists

Clinical Psychologist, Psychiatrist

Advanced Endocrinology Trainees



# THARAWAL METABOLIC PROGRAM

89 clients in clinic since 2021 (47 active)

29 participants included in the TGRS research project

16 participants have completed 6-months of follow up

6 participants have completed 1 year of follow up

3 participants progressed to publicly funding bariatric surgery

## FEEDBACK FROM PARTICIPANTS

- *"Inspired to lose weight, be bodily and mentally healthy and meet nice people. Great support by people who care" ~Bronwyn, 2024*
- *"With the support of the whole team I have lost over 30kgs, reconnected with my community, felt welcomed at the gym by my peers and staff" ~Linda, 2024*
- *"Being able to have access to the gym has given me social interaction and exercises that make me feel comfortable and in a safe place" ~Helen, 2024*
- *"I am now living not just existing" ~Amanda, 2024"*



# GOOD TUCKER ALL ROUND

	JAN-JUN	JUL-OCT
Go4Fun	0	0
Donation Funding	10	10
Macs	16	34
ER	3	0
Volunteer	40	34
Community	541	410
Waranwarin	26	30
Bfutures	0	0
Housing	22	18
CHSP	0	0
AOD	0	0
Mental Health	0	0
SWSLHD Dhealth	0	0
Total	694	536

# Social and Emotional Wellbeing (SEWB)



Commonwealth  
Home Support  
Program

Bringing  
Them Home

Mental  
Health

# What services do SEWB provide?

Domestic  
and Family  
Violence

Youth  
Support

Alcohol and  
Other Drugs



## How are SEWB tracking from our 12-month plan?

Last Year Plan	Now
Increase in staff	<ul style="list-style-type: none"><li>• We have had a staff increase on 141% from staffing numbers being 12 to 29 staff members in the SEWB Team</li></ul>
Increase in group work	<ul style="list-style-type: none"><li>• <b>DBT</b> – Our DBT group is now running in its 5<sup>th</sup> session with consistent attendance</li><li>• <b>Youth</b> – Our youth team has expanded their group to bring in the Dance and Didge Groups; we now also run school holiday programs for children that are engaged in the program</li><li>• <b>Elder's Groups</b> – We facilitate 3 elders' groups on a weekly basis through the Commonwealth Home Support Program.</li></ul>
Increase in our data collection	<ul style="list-style-type: none"><li>• Our data collection is tracking well that has allowed us to receive slight increases in funding from our funding bodies. We will continue to work on this as it is important for the work we do.</li></ul>



# SEWB Youth Programs

- Kid's Camp – January 2025
- Dance Group
- Youth Group
- Didge Group
- School Holiday Programs







## Commonwealth Home Support Program (Elders Programs)

Commonwealth Home Support Program (CHSP) has expanded its program in the last 7 months with expanding our services with now 70 elders signed onto the program

We have 9 staff members in this team doing social support individual with helping elders in their homes and social support groups, hosting activities at Tharawal or outings.



## **Domestic and Family Violence (DFV)**

---

Started in October 2024 with 4 staff members, now expanded to 6 staff.

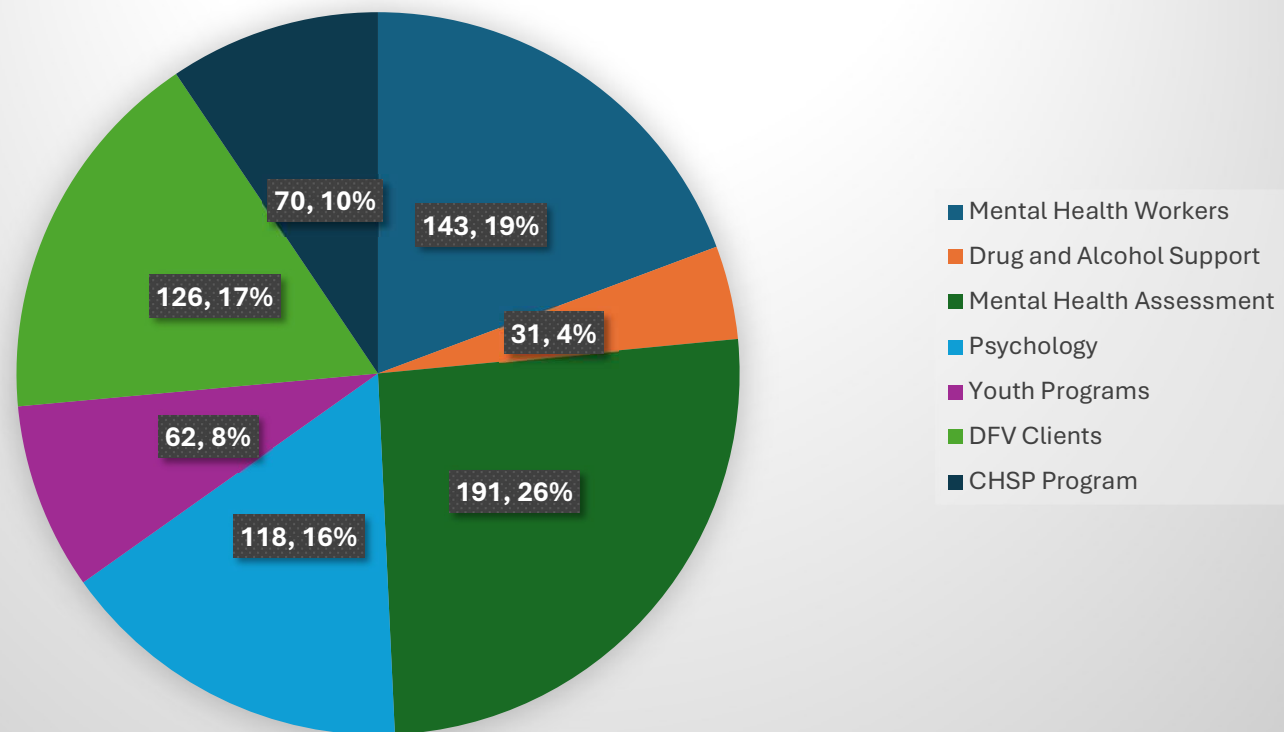
---

We work with women, men and children that are experiencing domestic and family violence

---

Tharawal DFV is one of the only service that supports men experiencing DFV.

## SEWB Clients seen November 2024 – November 2025

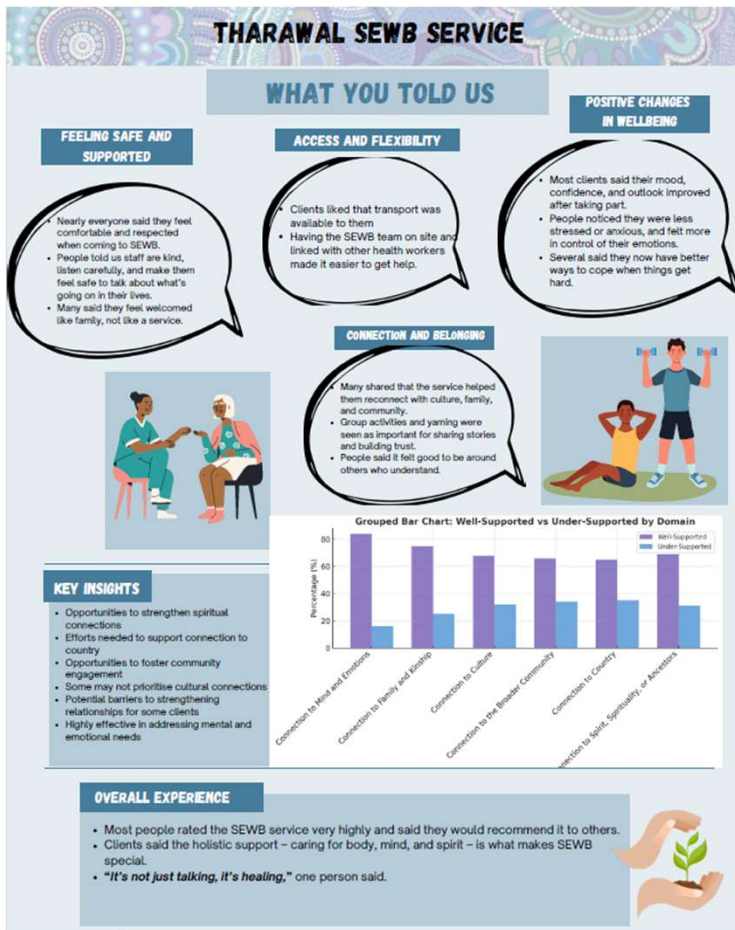


# SEWB Evaluation – Sax Institute

Tharawal SEWB was evaluated in partnership with the Sax Institute in late 2023 into mid 2024.

Some of the key findings which we have been working on are:

- Triaging process for specialist services.
- Waiting room is more inviting.
- More support for our youth.







## What does the next 12 months look like?

Focus on expansion in the aged care space – Have applied for funding to expand in this space.

Build more groups that are tailored to our community needs – Community feedback and consultations to begin.

Presenting opportunities for SEWB Team – One opportunity has been accepted for March next year.

Expand youth program to try and engage more disengaged and at-risk youth

Develop more information resources for promotion – Flyers, digital resources etc.

# Waranwarin Tharawal Child and Family Centre



Waranwarin Early Learning Centre



Family Programs



Family Health Connector

# Waranwarin Early Learning Centre

## Enrolments

- Total of 122 children enrolled in 2025.
- 77 children, aged 6 weeks old – 5 years of age.
- 45 children enrolled in Outside of School Hours with 18 regular after school care children.
- 10 children graduating from preschool to Kindergarten

## Partnerships with outside agencies

- The Gujaga Foundation
- South Western Sydney LHD
- Australian Literacy and Numeracy Foundation

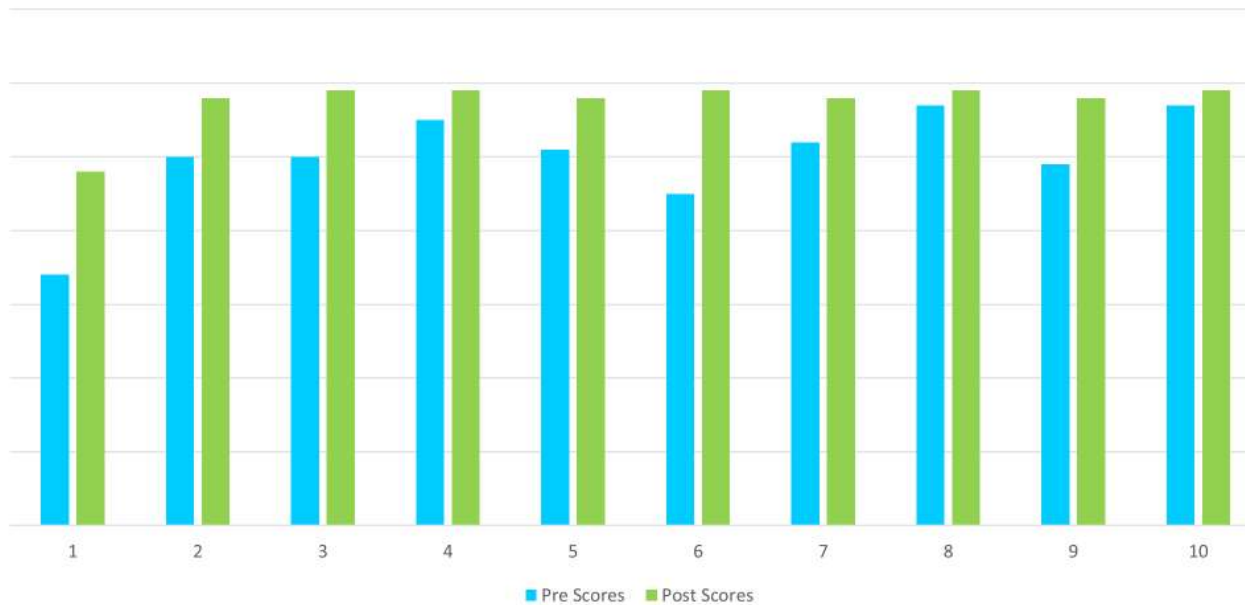




# Waranwarin Early Learning Centre

Educators work very hard throughout the year improving children's growth and developmental areas using the Early Years Learning Framework milestones, below indicates this year's graduate class and how they have improved in the early years before the children start their formal education.

School Readiness Checklist





# Family Programs 2025



Family Programs offer the following activities

- Supported Playgroups x 2
- Parenting Programs
- Deadly Homework Club x 3
- Cultural Sewing Program
- Family Holiday Activities
- Camps

# Oorungah Wandarrah MACS Centre

- **54** children enrolled
- **10** children graduating
- Weekly visiting Allied Health team:
  - Child Psychologist
  - Speech Therapist
  - Occupational Therapist
- Gujaga-Dharawal language group, twice a week
- Australian Literacy & Numeracy Foundation support with books and breakfast program
- School transition program with Briar Rd Public School every 2<sup>nd</sup> Monday





# Tharawal Housing Aboriginal Corporation

- 160 social housing properties being managed
- 9 affordable housing properties
- ERA house for people studying from remote areas
- 8 supported accommodation properties
  - Finding Your Way and Dubay Gunyah Transitional Housing Programs for men, women, children, families and education
- Sustaining Tenancies program has been refunded for a further 2 years
- ORIC audit successfully completed October 2025





THANK YOU